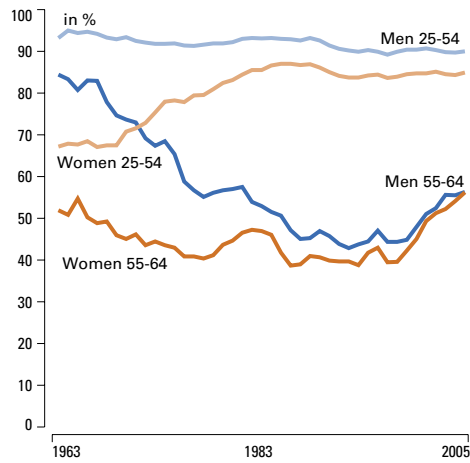


Finland



Labour Force Participation Rate*, 1963-2005



* See Notes

© European Centre, Vienna

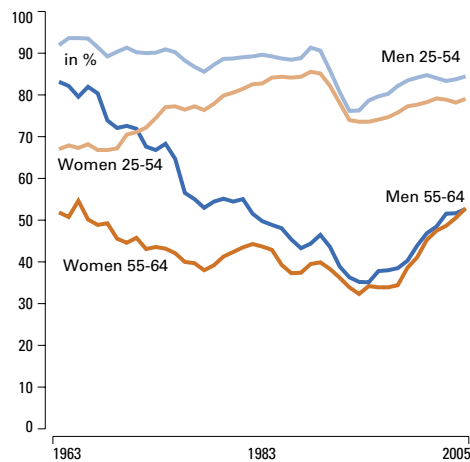
Sources:

Labour Force Participation Rate, Employment Rate, Share, Unemployment: OECD statistics, 2006
Median Age: Own calculations based on the ECHP

Notes:

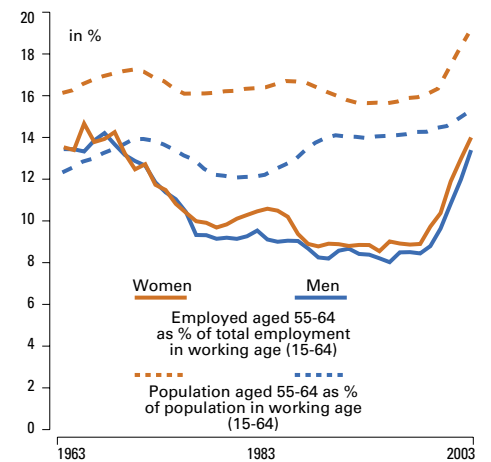
* ratio between the number of persons in the labour force (employed or unemployed) in a given age group and the population in the same age group.
** % of employed individuals on the working age population.
*** % of employed persons in a given age group on the population in the same age group.

Employment Rate**, 1963-2005



* See Notes

Share of Workers aged 55-64 in Employment and Population, 1963-2005



Indicators



Demographic Indicators



Income and Wealth

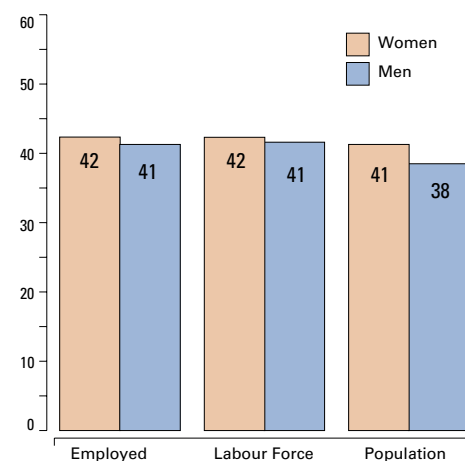


Labour Market and
Labour Market Participation

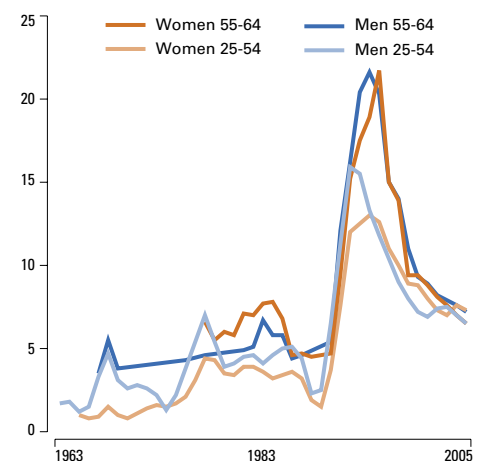


Social Protection and Financial
Sustainability

Median Age, 2001



Unemployment Rates***, 1963-2005

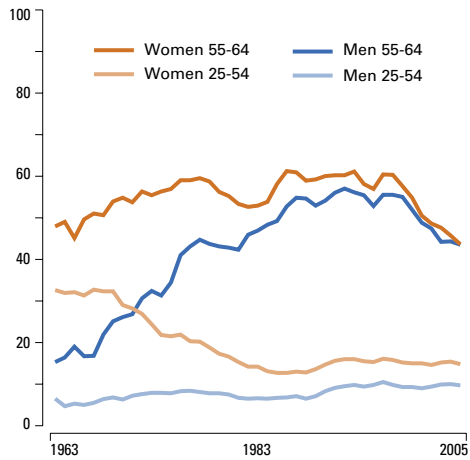


* See Notes

Finland

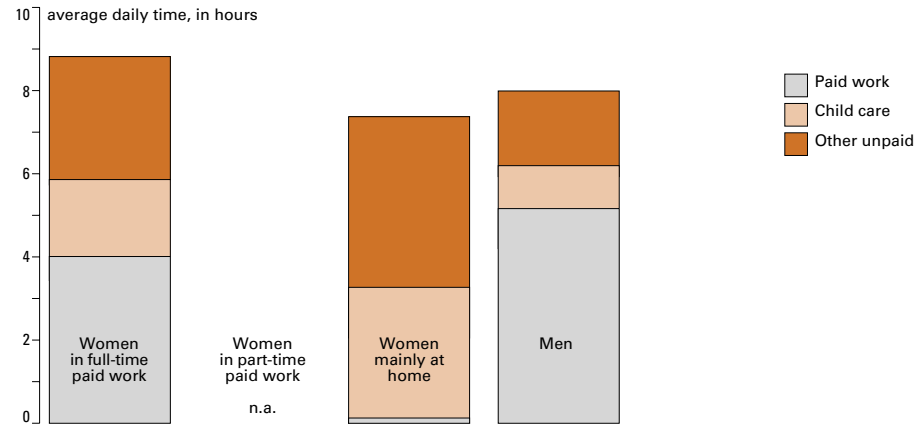


Inactivity Rates*, 1963-2005



*See Notes

Time Spent in Paid vs. Unpaid Work Activities*, 1999-2000



*Couples with a child under age 7

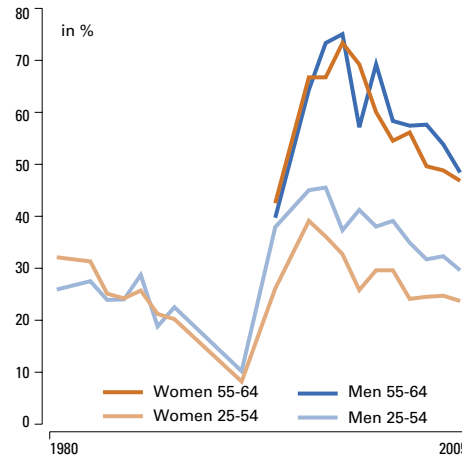
Sources:

Inactivity Rates and Long-Term Unemployment: OECD statistics, 2006
Time Spent: OECD, Babies and bosses, 2002-2005
Average Exit Age: OECD Statistics, 2006;
 Own calculations based on the ECHP
Early/Late Retirement: European Commission

Notes:

* ratio between the number of persons out the labour force (neither employed nor unemployed) in a given age group and the population in the same age group.
 ** % of long-term unemployed (individuals who are unemployed for more than 1 year) on the total number of unemployed individuals (OECD definition)

Long-Term Unemployment Rates**, 1980-2005



*See Notes

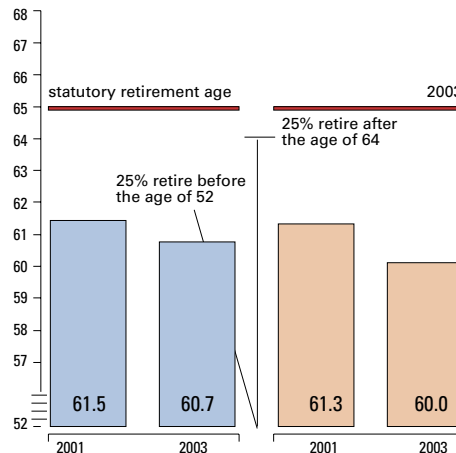
Share of Non-Employed Disability Benefit Recipients

n.a.

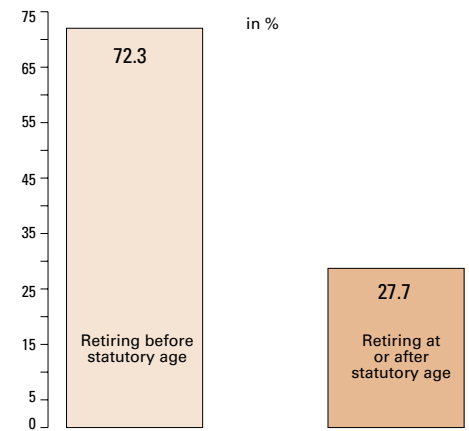
Age Discrimination

n.a.

Average Effective Labour Market Exit Age

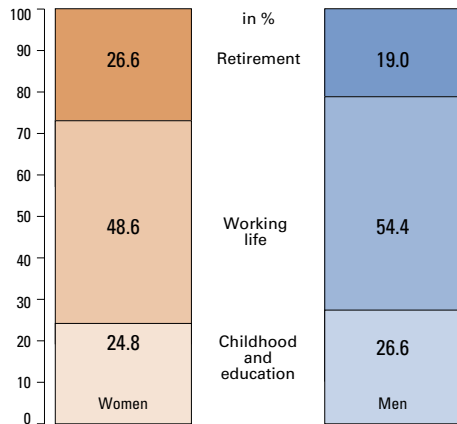


Early / Late Retirement, 2001



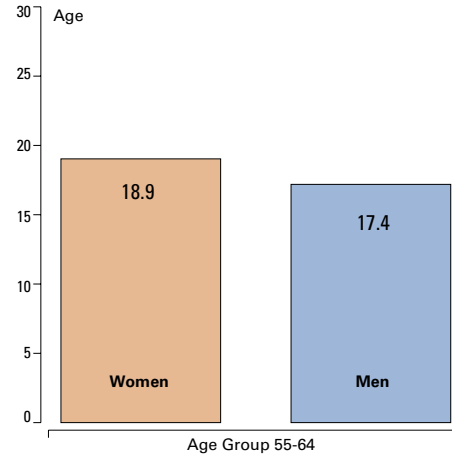


Lifetime Allocation*, 2000

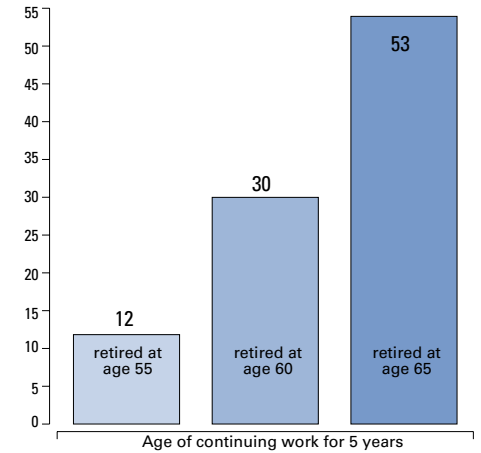


* Based on average ages of entry and exit to/from the labour market calculated for 2000

Average Age of Entry into Employment, 2000



Implicit Tax on Continuing Working, 2003 *



*For a single worker with average production worker earnings

Flexible Retirement

Early retirement:

Earliest possible retirement age: 60
No upper limit to withdraw pensions

Special Retirement Schemes:

Several: disability pensions and unemployment pension

Sources:
Lifetime Allocation: Burniaux et al, OECD, 2003
Entry into Employment: European Commission, Employment in Europe 2003
 European Commission, 2003
Implicit Tax: Duval, OECD, Economics Department WP 370, 2003
Flexible Retirement: Adequate and sustainable pensions - Joint report by the Commission and the Council, 2003; Finnish Ministry of Social Affairs and Health