

Germany

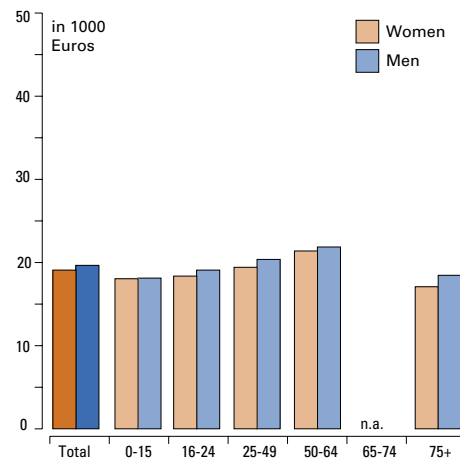


© European Centre, Vienna



Income and Wealth

Mean Equivalised Income*, 2005



*Mean net household income, not equivalised

Sources:

Average Income, Relative Income, S80/S20 share, Poverty Rate: EUROSTAT,

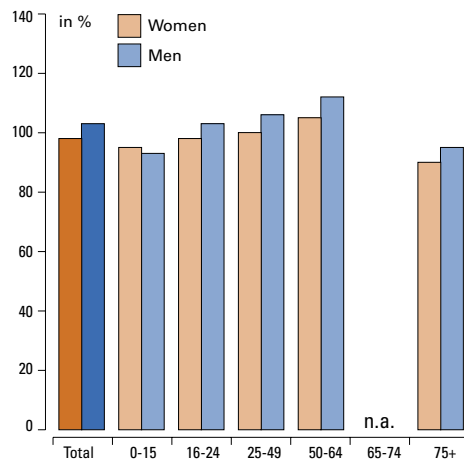
Income and Living Conditions Indicators, 2006

Income Composition: Own calculations based on ECHP

Notes:

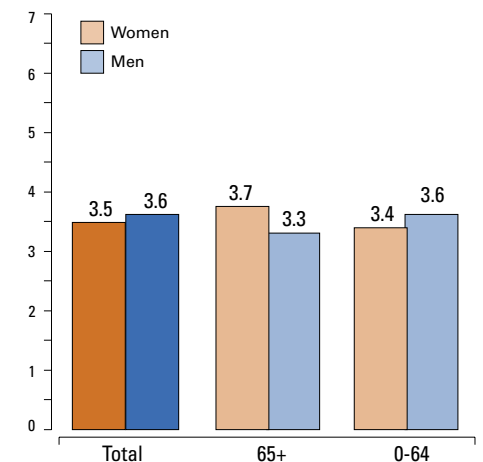
We refer from now onwards to disposable household income equivalised using the OECD modified equivalence scale

Relative Disposable Income*, 2005



*Median net income by age group and gender compared to total population

S80/S20 Ratio of disposable Income, 2000



Indicators



Demographic Indicators



Income and Wealth

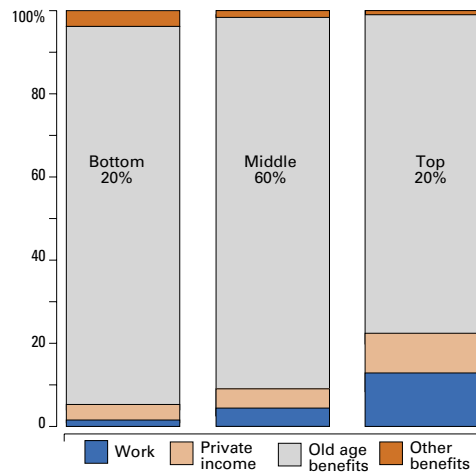


Labour Market and Labour Market Participation

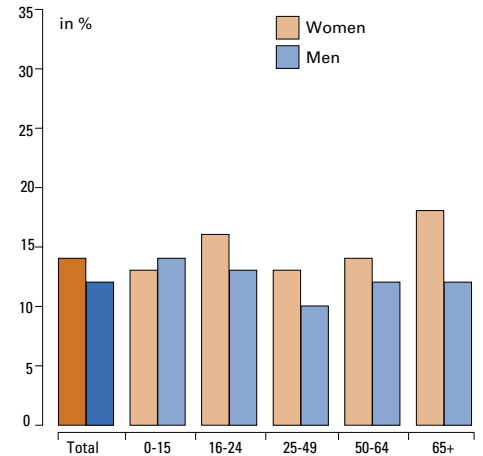


Social Protection and Financial Sustainability

Income Composition, by Income Groups, Age Group 65-74, 2001



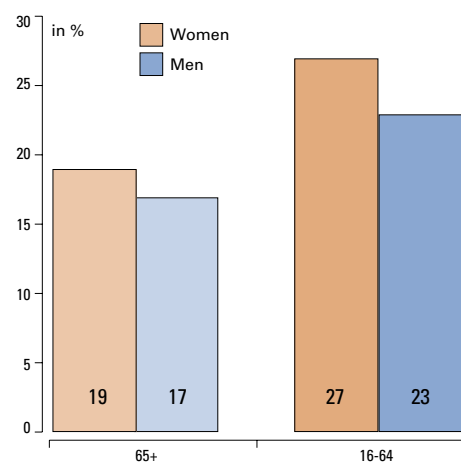
Relative Income Poverty Rate*, 2005



*0-15: no gender breakdown

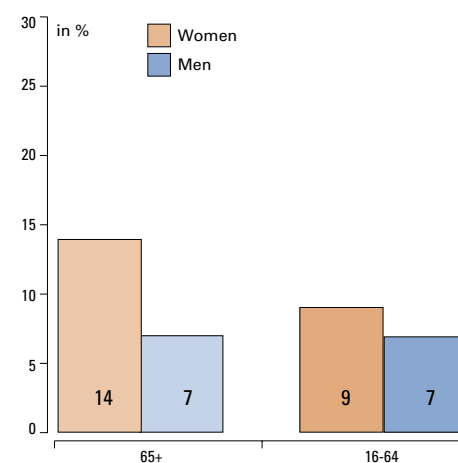


Median Income Poverty Gap*, 2004



*at 60% median threshold

Persistent Income Poverty Rate*, 2004



*3 years poor out of 4

Sources

Poverty Gap; Persistent Poverty Rate:
EUROSTAT, Income and Living Conditions Indicators, 2006

Income Composition: Own calculations based on ECHP:

Institutional Features:

MISSOC, Social protection systems in the Member states and the European Economic Area (2006); National source

Minimum Income Level:

Eurostat 2001

EUROSTAT,

Income and Living Conditions Indicators, 2006

Institutional Features of the Minimum Income Guarantee for older People, 2006

Minimum pension:

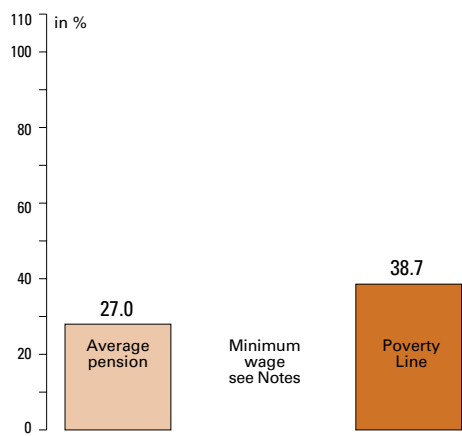
No statutory minimum pension.

Non contributory Minima:

Main conditions of eligibility and amount payable:

Persons from the age of 65 or persons from the age of 18 if permanently incapable of work for medical reasons. Usual residence in the Federal Republic of Germany. With the exception of the abandonment of recourse to maintenance payments and the exclusion of the liability of the heir, the terms correspond to the assistance for subsistence resources (Hilfe zum Lebensunterhalt) in accordance with the Third Chapter of the Social Code, Book XII. Thus, since 1 January 2005 the new standard rates system has also been fully applied to basic resources.

Minimum Income Level as % of *, 2001



*No determined minimum wage exists

Number of Claimants of Minimum Income Guarantee, 2000-2006

n.a.

Per Capita Expenditure on Minimum Income Protection Schemes, 2005

n.a.

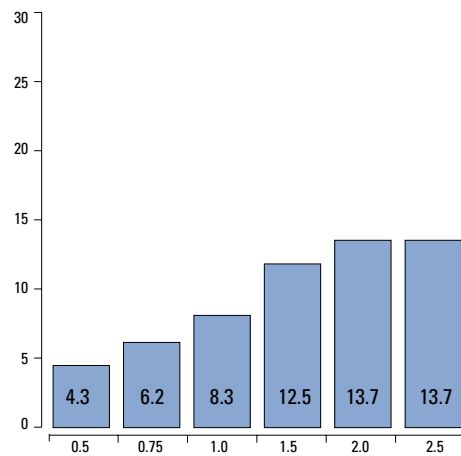


Composition of Wealth Holdings by Components

n.a.

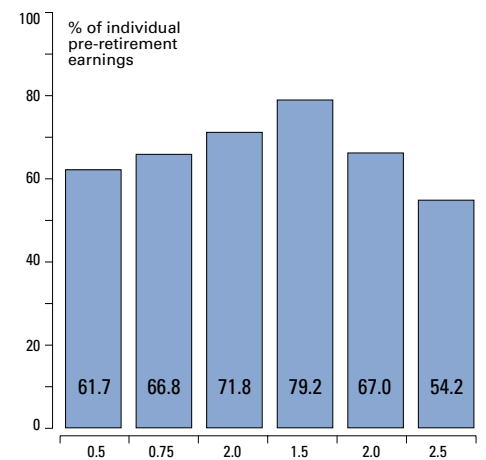
Sources:
Pension Wealth, Replacement Rates:
OECD, Pensions at a Glance (2005)

Gross Pension Wealth, 2005



*By earnings level: multiple of national average earnings

Net Replacement Rates, 2005



*By earnings level: multiple of national average earnings