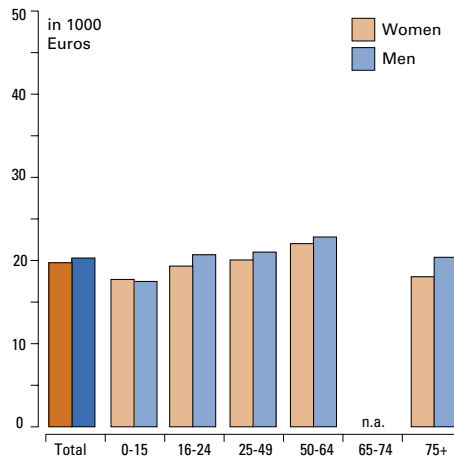




Income and Wealth

Mean Equivalised Income*, 2005



*Mean net household income, not equivalised

© European Centre, Vienna

Sources:

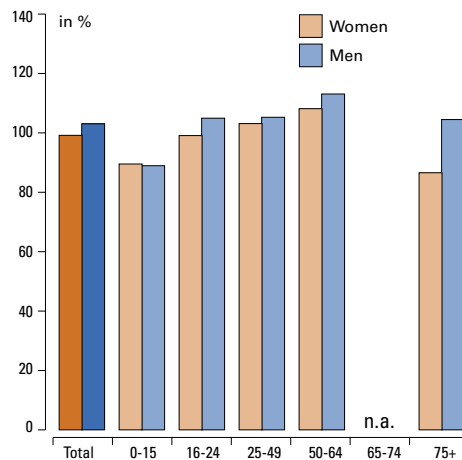
Average Income, Relative Income, S80/S20 share, Poverty Rate: EUROSTAT,

Income and Living Conditions Indicators, 2006
Income Composition: Own calculations based on ECHP

Notes:

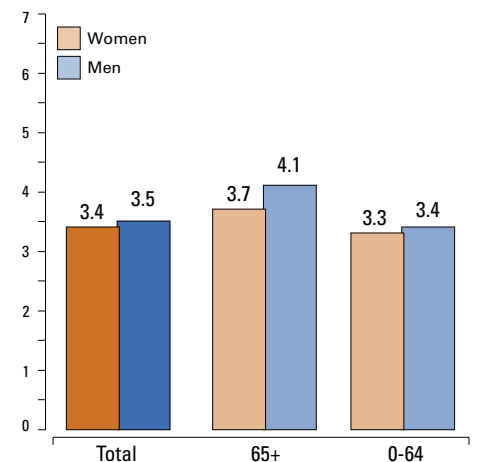
We refer from now onwards to disposable household income equivalised using the OECD modified equivalence scale

Relative Disposable Income*, 2005



*Median net income by age group and gender compared to total population

S80/S20 Ratio of disposable Income, 2001



Indicators



Demographic Indicators



Income and Wealth

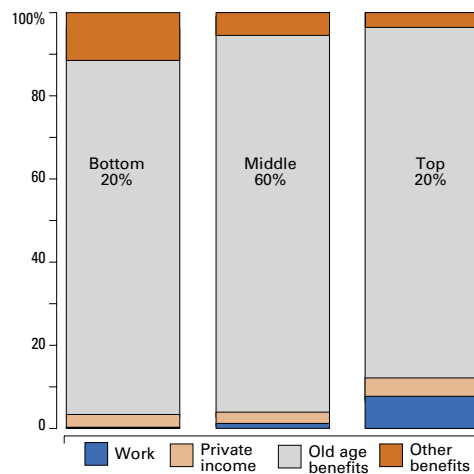


Labour Market and Labour Market Participation

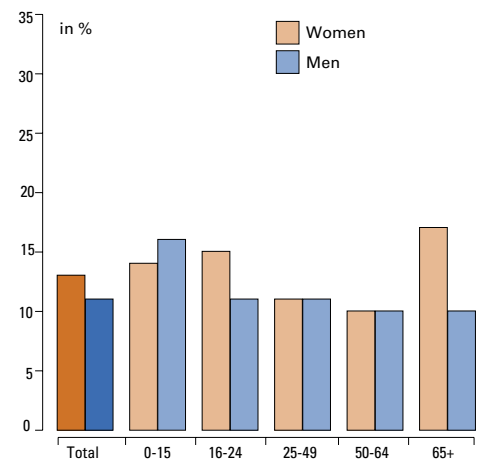


Social Protection and Financial Sustainability

Income Composition, by Income Groups, Age Group 65-74, 2001



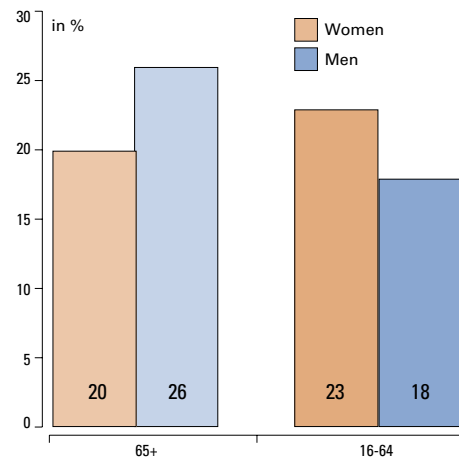
Relative Income Poverty Rate*, 2005



*0-15: no gender breakdown

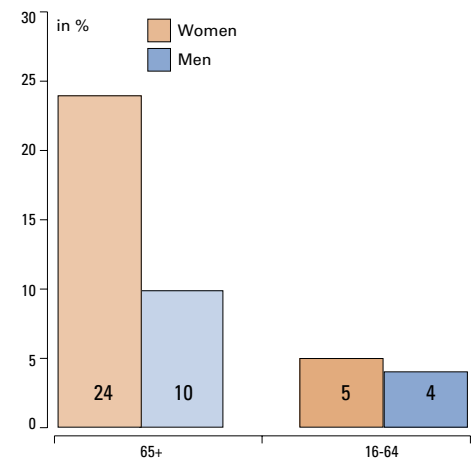


Median Income Poverty Gap*, 2004



*at 60% median threshold

Persistent Income Poverty Rate*, 2001



*3 years poor out of 4

Sources

Poverty Gap; Persistent Poverty Rate:
EUROSTAT, Income and Living Conditions Indicators, 2006

Income Composition: Own calculations based on ECHP:

Institutional Features:

MISSOC, Social protection systems in the Member states and the European Economic Area (2006);

National source

Minimum Income Level:

Eurostat 2001

EUROSTAT,

Income and Living Conditions Indicators, 2006

Institutional Features of the Minimum Income Guarantee for older People, 2006

Minimum pension:

As far as the monthly pension or pensions including other income (also of the spouses living in the same households) are below the following amounts, a compensation supplement (Ausgleichszulage) is due in the amount of the respective difference:

Single pensioners: € 690.00,

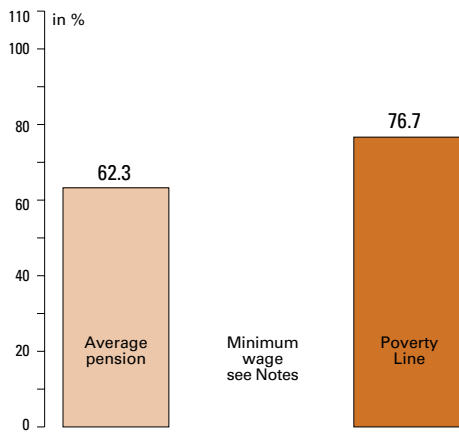
Pensioners living in the same household with spouse: € 1,055.99.

Increase of the compensation supplement for each child up to the completion of age 18 or of age 27 for children engaged in vocational training or university education, no age limit in case of children with disabilities: € 72.32.

Non contributory Minima:

No special scheme, covered by social assistance (Sozialhilfe). (Basic rates (Richtsätze) are fixed by the Länder. Regional differentiation, e.g. the basic rates for single persons are between € 414.00 and € 532.20 per month and Couple without children: € 606.00 to €789.10.)

Minimum Income Level as % of *, 2006



*No determined minimum wage exists

Number of Claimants of Minimum Income Guarantee, 2000-2006

n.a.

Per Capita Expenditure on Minimum Income Protection Schemes, 2005

n.a.

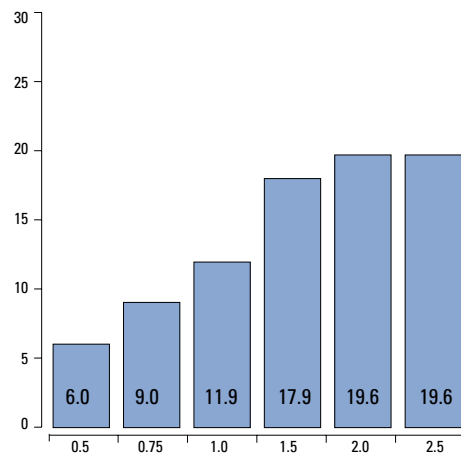


Composition of Wealth Holdings by Components

n.a.

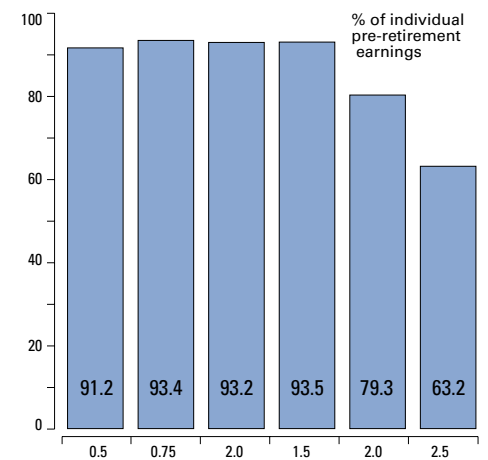
Sources:
Pension Wealth, Replacement Rates:
OECD, Pensions at a Glance (2005)

Gross Pension Wealth, 2005



*By earnings level: multiple of national average earnings

Net Replacement Rates, 2005



*By earnings level: multiple of national average earnings

